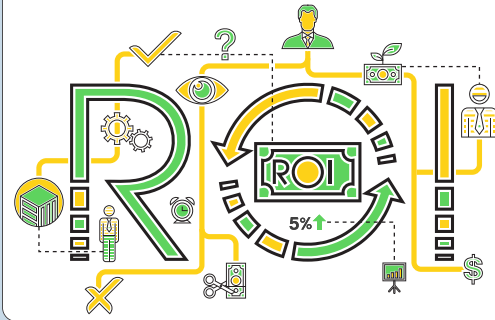
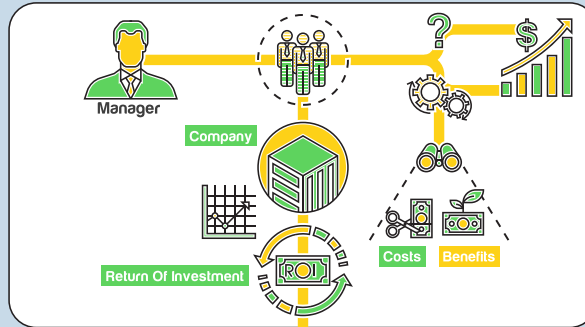


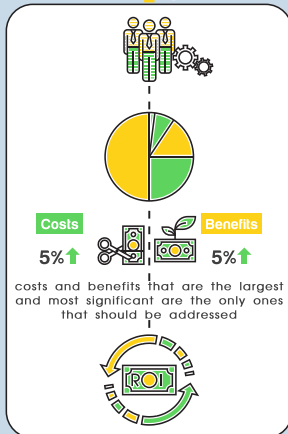
The Virtual Workforce: Measuring the Return on Investment



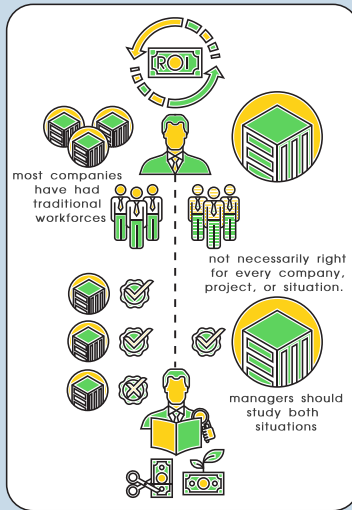
The Virtual Workforce: Measuring the Return on Investment



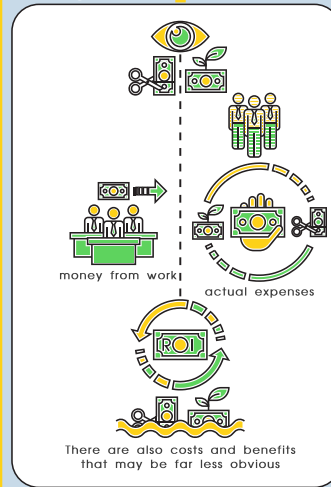
Included Costs and Benefits Should Be Significant



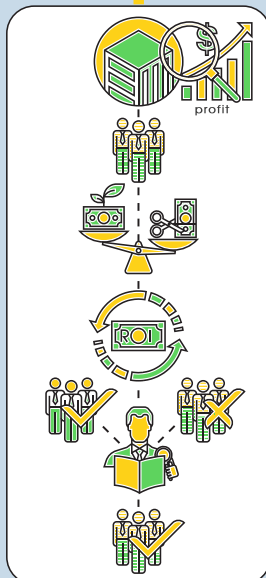
Benchmark the Virtual Workforce Against Its Traditional Counterpart



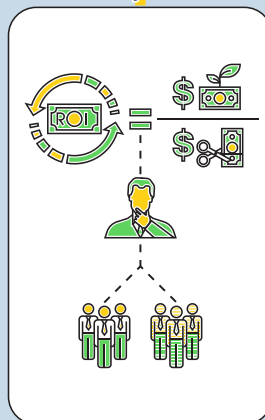
The Ease of Cost-Benefit Factor Recognition Should Be Considered



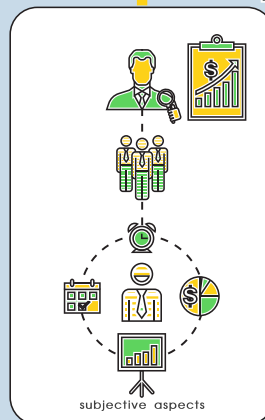
Look Carefully at Objective, Bottom-Line Outcomes



ROI is Equal to the Benefits Divided by the Costs



Consider Subjective Outcomes, Which Are Harder to Quantify



Input of Resources is an Often Overlooked Cost

